

ComboXCAT-IP

KVM-over-IP Module



Quick Setup Guide

Rev 1.0

1. Application Diagrams

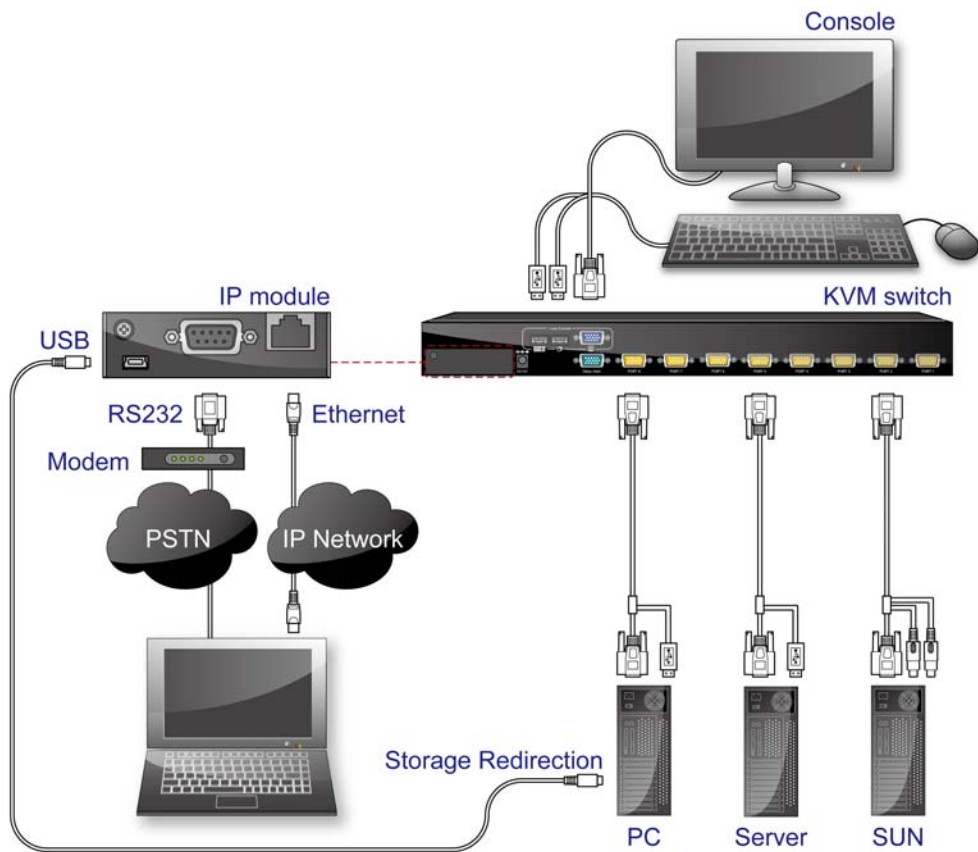


Figure 1: ComboXCAT-IP Application Layout



Figure 2: ComboXCAT-IP Module Product View

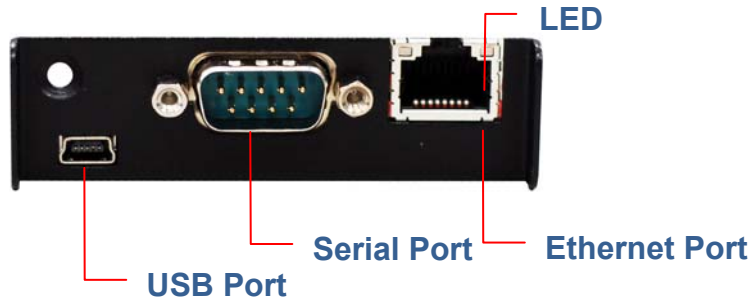


Figure 3: ComboXCAT-IP Module Front-Panel View

2. Initial Configuration

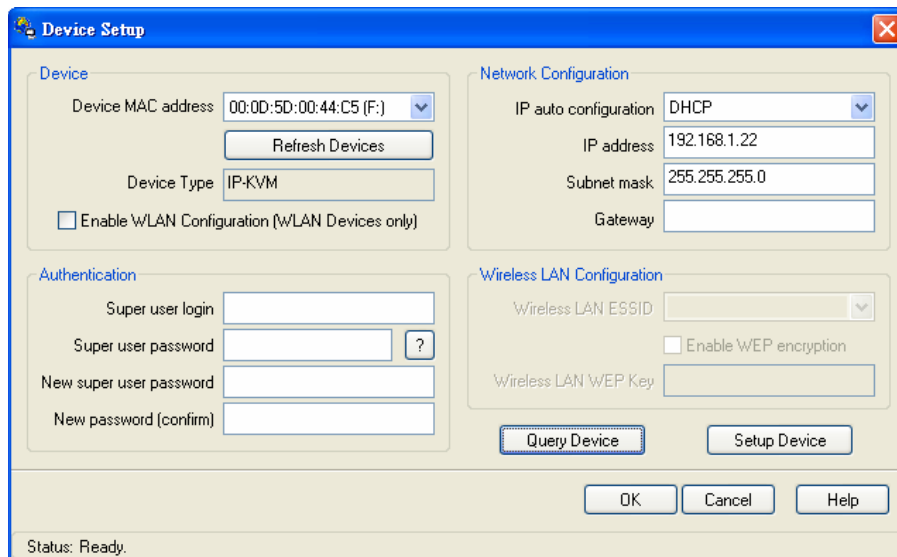
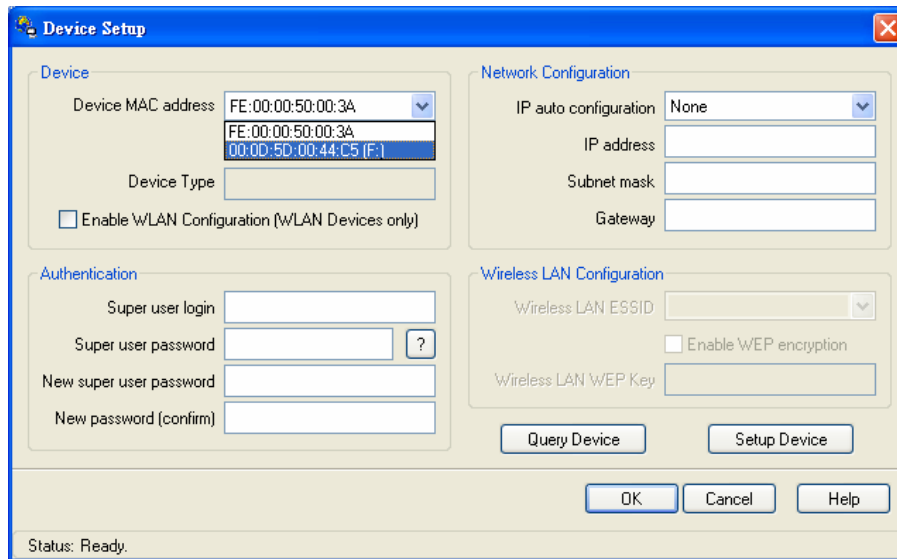
The factory preconfigured IP configuration of ComboXCAT-IP is as the following:

IP:	192.168.1.220
Subnet Mask:	255.255.255.0
Default Gateway:	192.168.1.1

You can change these setting by using **ComboXCAT-IP-Setup.exe** program, running on a laptop that gets connected to ComboXCAT-IP using an Ethernet crossover cable.

ComboXCAT-IP-Setup.exe program can be found on the "Literature" tab for ComboXCAT-IP product on Rackit's web site.

1. Connect ComboXCAT-IP to a computer using a crossover Ethernet cable.
2. Run **ComboXCAT-IP-Setup.exe** on the computer:
 - a. Select the device showing the MAC address which is labeled on bottom of ComboXCAT-IP module.
 - b. Click on "Query Device".



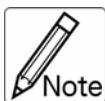
3. Setup a fixed IP
 - a. Setup "IP auto configuration" or setup IP address and Subnet mask
 - b. Enter a supervisor login and password for authentication (default user name and password: super/pass)
 - c. Setup Device. If supervisor login was authenticated, it'll show "Successfully Configured Device". Otherwise it'll show "Permission Denied".

The screenshot shows a 'Device Setup' window with the following sections:

- Device:** Device MAC address (00:0D:5D:00:44:C5 (F:)), Refresh Devices button, Device Type (IP-KVM), and an unchecked checkbox for 'Enable WLAN Configuration (WLAN Devices only)'.
- Network Configuration:** IP auto configuration (None), IP address (192.168.0.70), Subnet mask (255.255.255.0), and Gateway (empty).
- Authentication:** Super user login (super), Super user password (masked with asterisks), New super user password, and New password (confirm).
- Wireless LAN Configuration:** Wireless LAN ESSID (empty), an unchecked checkbox for 'Enable WEP encryption', and Wireless LAN WEP Key (empty).

Buttons at the bottom include 'Query Device', 'Setup Device', 'OK', 'Cancel', and 'Help'. The status bar at the bottom reads 'Status: Setup device...'.

4. Unplug crossover Ethernet cable from ComboXCAT-IP.
5. Using an Ethernet cable, connect ComboXCAT-IP to your LAN (Local Area Network) switch.



Please read the "ComboXCAT-IP User Guide" for more information on ComboXCAT-IP.